



India Meteorological Department  
(Ministry of Earth Sciences)

SPECIAL MESSAGE (BOB/03/2022)

TIME OF ISSUE:0100 HOURS IST

DATED: 06.05.2022

FROM: INDIA METEOROLOGICAL DEPARTMENT (FAX NO. 24643965/24699216/24623220)

TO: CONTROL ROOM, NDM, MINISTRY OF HOME AFFAIRS (FAX.NO. 23093750)  
CONTROL ROOM NDMA (FAX.NO. 26701729)  
CABINET SECRETARIAT (FAX.NO.23012284, 23018638)  
PS TO HON'BLE MINISTER FOR S & T AND EARTH SCIENCES (FAX NO.23316745)  
SECRETARY, MOES (FAX NO. 24629777)  
H.Q. (INTEGRATED DEFENCE STAFF AND CDS) (FAX NO. 23005137/23005147)  
DIRECTOR GENERAL, DOORDARSHAN (23385843)  
DIRECTOR GENERAL, AIR (23421105, 23421219)  
PIB MOES (FAX NO. 23389042)  
UNI (FAX NO. 23355841)  
D.G. NATIONAL DISASTER RESPONSE FORCE (NDRF) (FAX NO. 26105912, 2436 3260)  
DIRECTOR, PUNCTUALITY, INDIAN RAILWAYS (FAX NO. 23388503)  
ADMINISTRATOR, ANDAMAN & NICOBAR ISLANDS (FAX NO. 03192- 232656)  
CHIEF SECRETARY, TAMIL NADU (FAX NO 044-25672304)  
CHIEF SECRETARY, PUDUCHERRY (FAX NO 0413-2334145)  
CHIEF SECRETARY, ANDHRA PRADESH (FAX NO. 0863-2441029, 08645-246600)  
CHIEF SECRETARY, ODISHA (FAX NO. 0674-2536660)  
CHIEF SECRETARY, WEST BENGAL (FAX NO. 033-22144328)

**Sub: Low pressure area over south Andaman Sea and adjoining southeast Bay of Bengal & it's likely intensification into a cyclonic storm by 8<sup>th</sup> May evening, 2022**

A **Low Pressure Area** lies over South Andaman Sea & adjoining Southeast Bay of Bengal at 0830 hours IST of today, the 6<sup>th</sup> May, 2022.

It is very likely to move northwestwards and intensify into a **Depression** over southeast Bay of Bengal by 7<sup>th</sup> May evening and into a **Cyclonic Storm** over eastcentral Bay of Bengal by 8<sup>th</sup> May evening. It is very likely to continue to move northwestwards and reach westcentral and adjoining northwest Bay of Bengal off North Andhra Pradesh and Odisha coasts on 10<sup>th</sup> May.

**Warnings:**

**(i) Rainfall (warning graphics enclosed)**

**6<sup>th</sup>-7<sup>th</sup> May:** Rainfall at most places with heavy to very heavy rainfall at isolated places very likely over Andaman & Nicobar Islands during 06th-07th May.

**10<sup>th</sup> May:** **Heavy Rainfall** at isolated places is likely over coastal Odisha.

**(ii) Wind warning**

➤ **6th May:** Squally wind speed reaching 40-50 kmph gusting to 60 kmph is very likely to prevail over South Andaman Sea & adjoining Southeast Bay of Bengal and Andaman & Nicobar Islands.

- **7th May:** Squally wind speed reaching 45-55 kmph gusting to 65 kmph is very likely to prevail over Andaman & Nicobar Islands, Andaman Sea and adjoining Southeast & Eastcentral Bay of Bengal.
- **8th May:** Squally wind speed reaching 55-65 kmph gusting to 75 kmph is likely to prevail over Southeast & adjoining Eastcentral Bay of Bengal and would gradually increase becoming gale wind speed reaching 65-75 gusting to 85 kmph over the same region from 8<sup>th</sup> May evening. Squally wind speed reaching 40-50 kmph gusting to 60 kmph is likely to prevail over Andaman Sea and Andaman & Nicobar Islands.
- **9<sup>th</sup> May:** Gale wind speed reaching 65-75 kmph gusting to 85 kmph is likely to prevail over central parts of Bay of Bengal.
- **10<sup>th</sup> May:** Gale wind speed reaching 80-90 kmph gusting to 100 kmph is likely to prevail over Westcentral and adjoining Northwest & Eastcentral Bay of Bengal.

**(iii) Sea condition**

- **6<sup>th</sup>- 7<sup>th</sup> May:** Sea condition is very likely to become rough to very rough over Andaman Sea and adjoining southeast Bay of Bengal.
- **8<sup>th</sup> May:** Sea condition is very likely to become high over Southeast & adjoining Eastcentral Bay of Bengal. The sea condition over Andaman Sea would gradually improve becoming rough.
- **9<sup>th</sup>- 10<sup>th</sup> May:** Sea condition is likely to become high over central parts of Bay of Bengal on 9<sup>th</sup> May and over Westcentral & adjoining Northwest and Eastcentral Bay of Bengal on 10<sup>th</sup> May.

**(iv) Fishermen Warning (Graphics enclosed)**

- Fishermen are advised not to venture into Andaman Sea and adjoining Southeast Bay of Bengal during 6<sup>th</sup>-8<sup>th</sup> May.
- Fishermen are advised not to venture into Eastcentral Bay of Bengal on 8<sup>th</sup> & 9<sup>th</sup> May.
- Fishermen are advised not to venture into central parts of Bay of Bengal on 9<sup>th</sup> & 10<sup>th</sup> May and over Northwest Bay of Bengal on 10<sup>th</sup> May.
- Fishermen out at sea are advised to return to coast.

**(v) ACTION SUGGESTED for Andaman and Nicobar Islands during 6<sup>th</sup> – 8<sup>th</sup> May**

- Total suspension of fishing and tourism activities.
- Check for traffic congestion on your route before leaving for your destination.
- Follow any traffic advisories that are issued in this regard.
- Avoid going to areas that face the water logging problems often.
- Avoid staying in vulnerable structure.
- Regulate off-shore activities

**The system is under continuous surveillance and the next message will be issued at 1130 hours IST of tomorrow, the 7<sup>th</sup> May, 2022.**

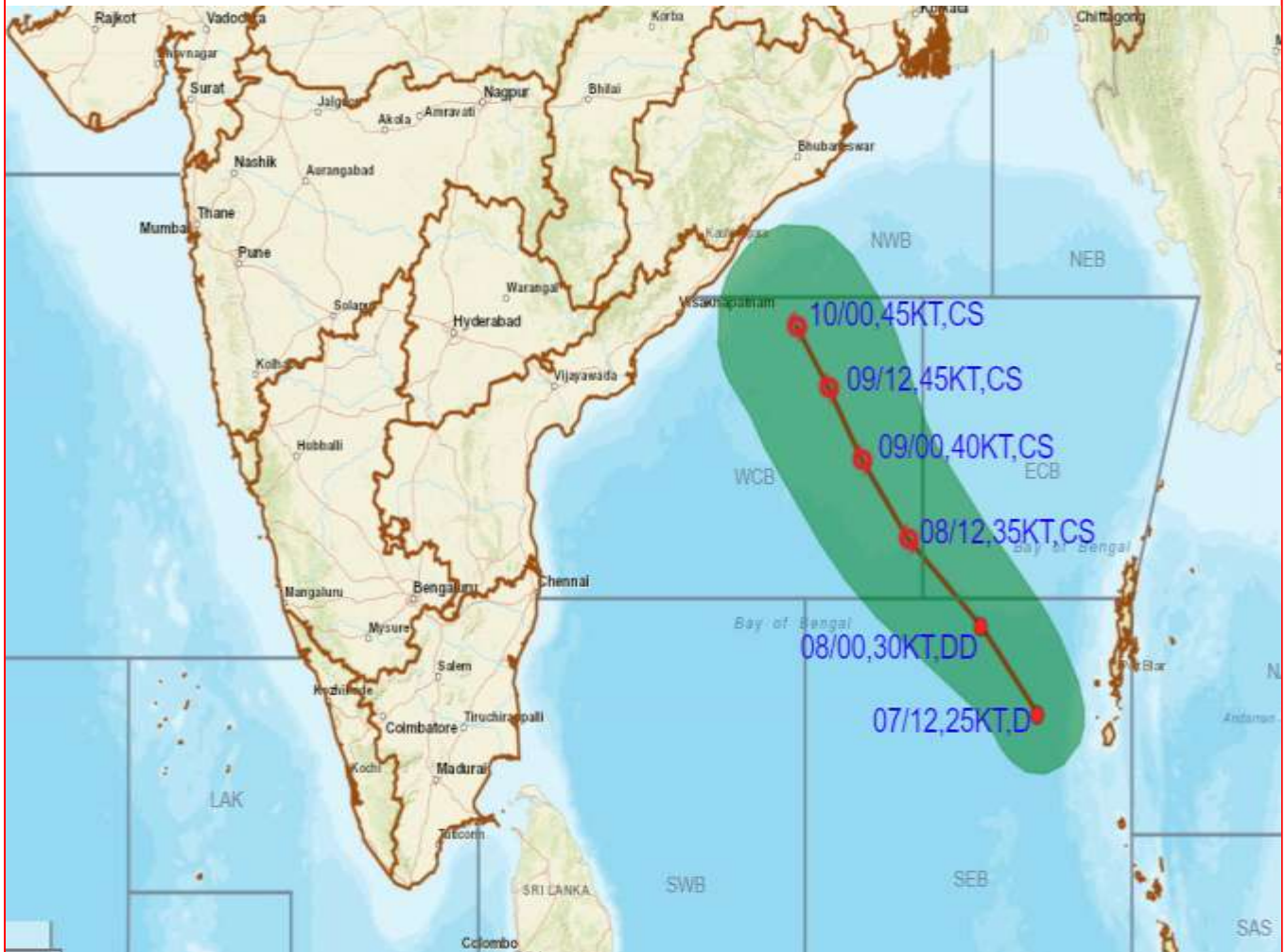
**(Ananda Kumar Das)**  
**Scientist-E, RSMC, New Delhi**

*Copy to: ACWC Kolkata/ ACWC Chennai/ CWC Bhubaneswarr/CWC Vishakhapatnam/MO Port Blair*

**LEGEND: Heavy Rainfall:** 64.5 to 115.5mm, **Very Heavy Rainfall:** 115.6 to 204.4mm **Most Places:** more than 76% of total stations, **Isolated Places:** Less than 25% of total



**EXPERIMENTAL PRE-GENESIS TRACK AND INTENSITY FORECAST ALONGWITH CONE OF UNCERTAINTY ISSUED AT THE STAGE OF LOW PRESSURE AREA OVER SOUTH ANDAMAN SEA AND ADJOINING SOUTHEAST BAY OF BENGAL ON 0300 UTC OF 6<sup>TH</sup> MAY 2022**

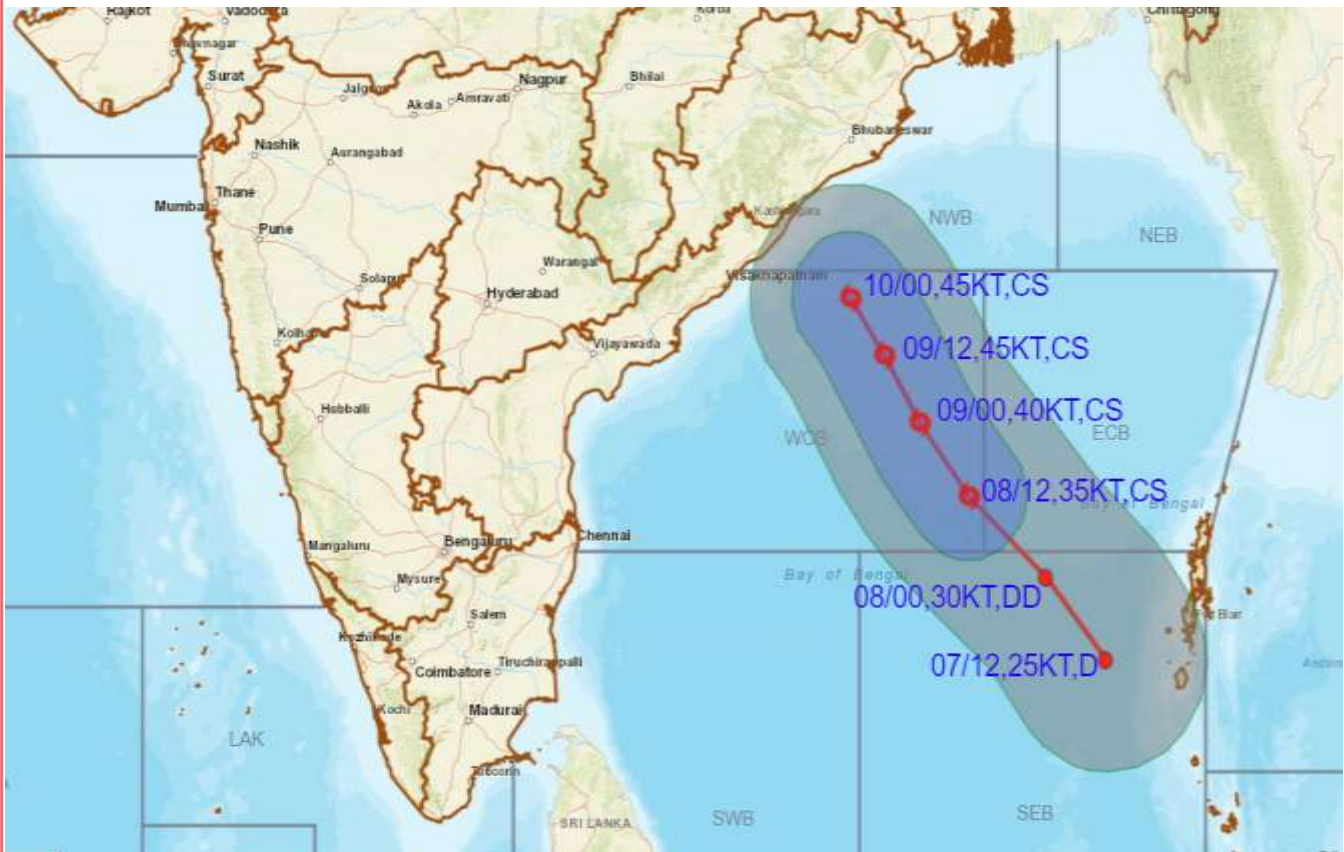


DATE/TIME IN UTC  
IST=UTC + 0530  
L: LOW PRESSURE AREA  
WML: WELL MARKED LOW PRESSURE AREA  
D: DEPRESSION (17-27 KT)  
DD: DEEP DEPRESSION (28-33 KT)  
CS: CYCLONIC STORM (34-47 KT)  
SCS: SEVERE CYCLONIC STORM (48-63KT)  
VSCS: VERY SEVERE CYCLONIC STORM (64-89 KT)  
ESCS: EXTREMELY SEVERE CYCLONIC STORM (90-119 KT)  
SuCS: SUPER CYCLONIC STORM ( $\geq$  120 KT)

- LESS THAN 34 KT
- 34-47 KT
- $\geq$  48 KT
- OBSERVED TRACK
- FORECAST TRACK
- CONE OF UNCERTAINTY



**EXPERIMENTAL PRE-GENESIS TRACK AND INTENSITY FORECAST  
ALONGWITH QUADRANT WIND DISTRIBUTION ISSUED AT THE STAGE OF  
LOW PRESSURE AREA OVER SOUTH ANDAMAN SEA AND ADJOINING  
SOUTHEAST BAY OF BENGAL ON 0300 UTC OF 6TH MAY 2022**



DATE/TIME IN UTC  
IST=UTC + 0530  
L: LOW PRESSURE AREA  
WML: WELL MARKED LOW PRESSURE AREA  
D: DEPRESSION (17-27 KT)  
DD: DEEP DEPRESSION (28-33 KT)  
CS: CYCLONIC STORM (34-47 KT)  
SCS: SEVERE CYCLONIC STORM (48-63KT)  
VSCS: VERY SEVERE CYCLONIC STORM (64-89 KT)  
ESCS: EXTREMELY SEVERE CYCLONIC STORM (90-119 KT)  
SuCS: SUPER CYCLONIC STORM (≥ 120 KT)

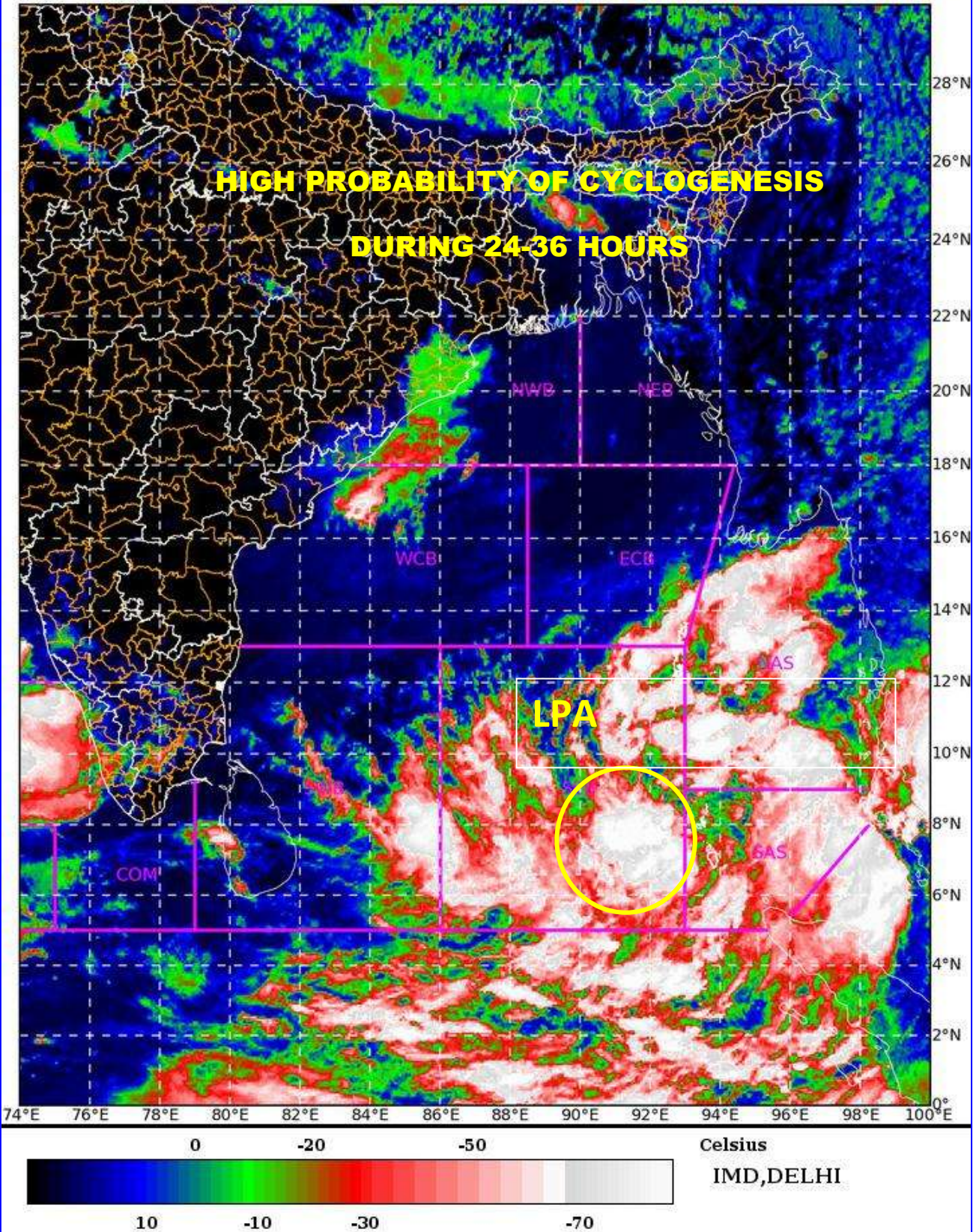
● LESS THAN 34 KT  
○ 34-47 KT  
● ≥ 48 KT  
— OBSERVED TRACK  
— FORECAST TRACK  
— CONE OF UNCERTAINTY  
AREA OF MAXIMUM SUSTAINED WIND SPEED:  
28-33 KT (52-61 KMPH)  
34-49 KT (62-91 KMPH)  
50-63 KT (92-117 KMPH)  
≥ 64 KT (≥118 KMPH)

**IMPACT OVER THE SEA**

MSW (knot/kmph)	Impact	Action
28-33 (52-61)	Very rough seas	Total suspension of fishing operations
34-49 (62-91)	High to very high seas	Total suspension of fishing operations
50-63 (92-117)	Very high seas	Total suspension of fishing operations
≥ 64 (≥118)	Phenomenal	Total suspension of fishing operations

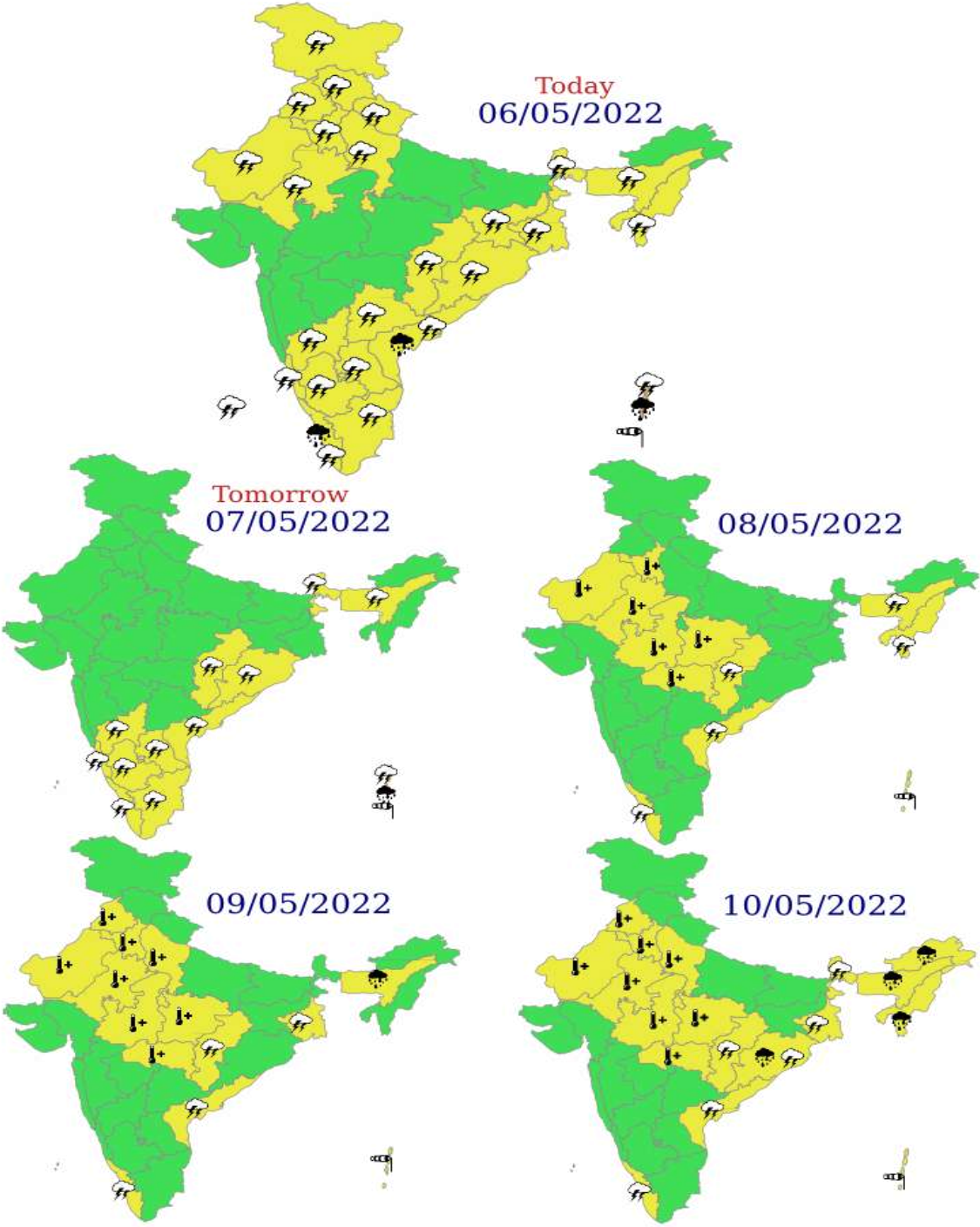


L1C Mercator



LPA- Low Pressure Area

# Warning Graphics



**WARNING**

<b>WARNING (TAKE ACTION)</b>
<b>ALERT ( BE PREPARED)</b>
<b>WATCH (BE UPDATED)</b>
<b>NO WARNING ( NO ACTION)</b>

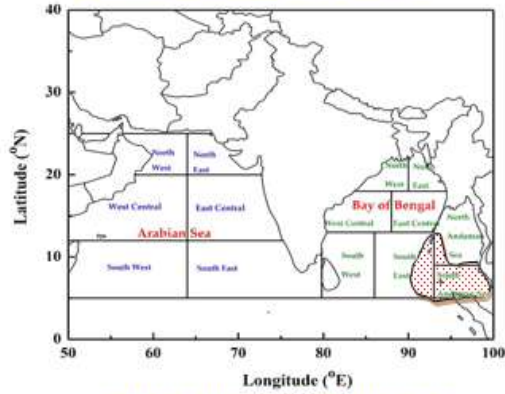
 **Heavy Rain**

 **Strong Winds**

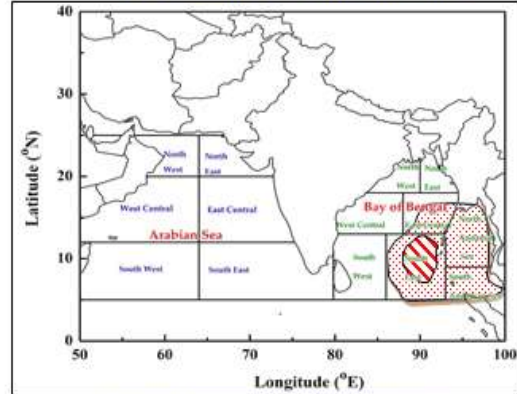
# Fishermen warning Graphics

## INDIA METEOROLOGICAL DEPARTMENT FISHERMAN WARNING FOR BAY OF BENGAL AND ARABIAN SEA

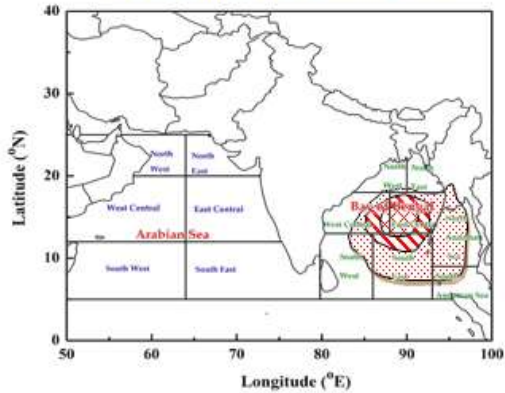
DAY-1: 06.05.2022/0600 UTC TO 07.05.2022/0600 UTC



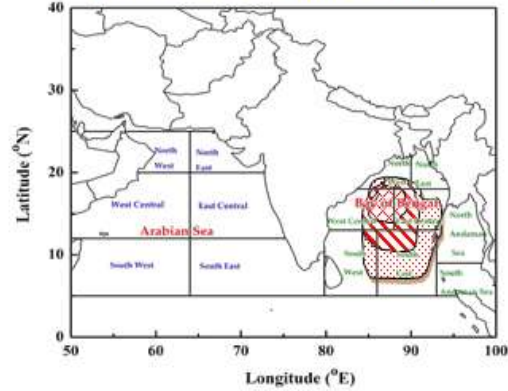
DAY-2: 07.05.2022/0600 UTC TO 08.05.2022/0600 UTC



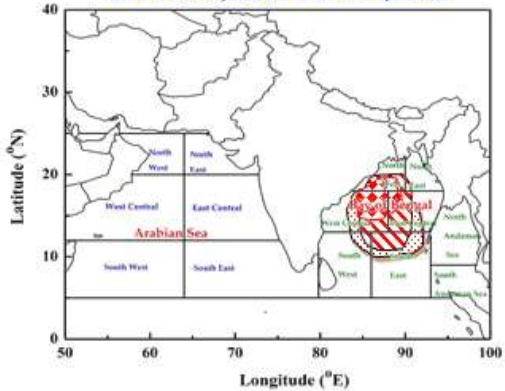
DAY-3: 08.05.2022/0600 UTC TO 09.05.2022/0600 UTC



DAY-4 09.05.2022/0600 UTC TO 10.05.2022/0600 UTC



DAY-5 10.05.2022/0600 UTC TO 11.05.2022/0600 UTC



### AREA UNDER FISHERMEN WARNING

-  40-50 KMPH GUSTING TO 60 KMPH (SQUALLY WEATHER)
-  45-55 KMPH GUSTING TO 65 KMPH (SQUALLY WEATHER)
-  55-65 KMPH GUSTING TO 70 KMPH
-  65-75 KMPH GUSTING TO 85 KMPH
-  70-80 KMPH GUSTING TO 90 KMPH